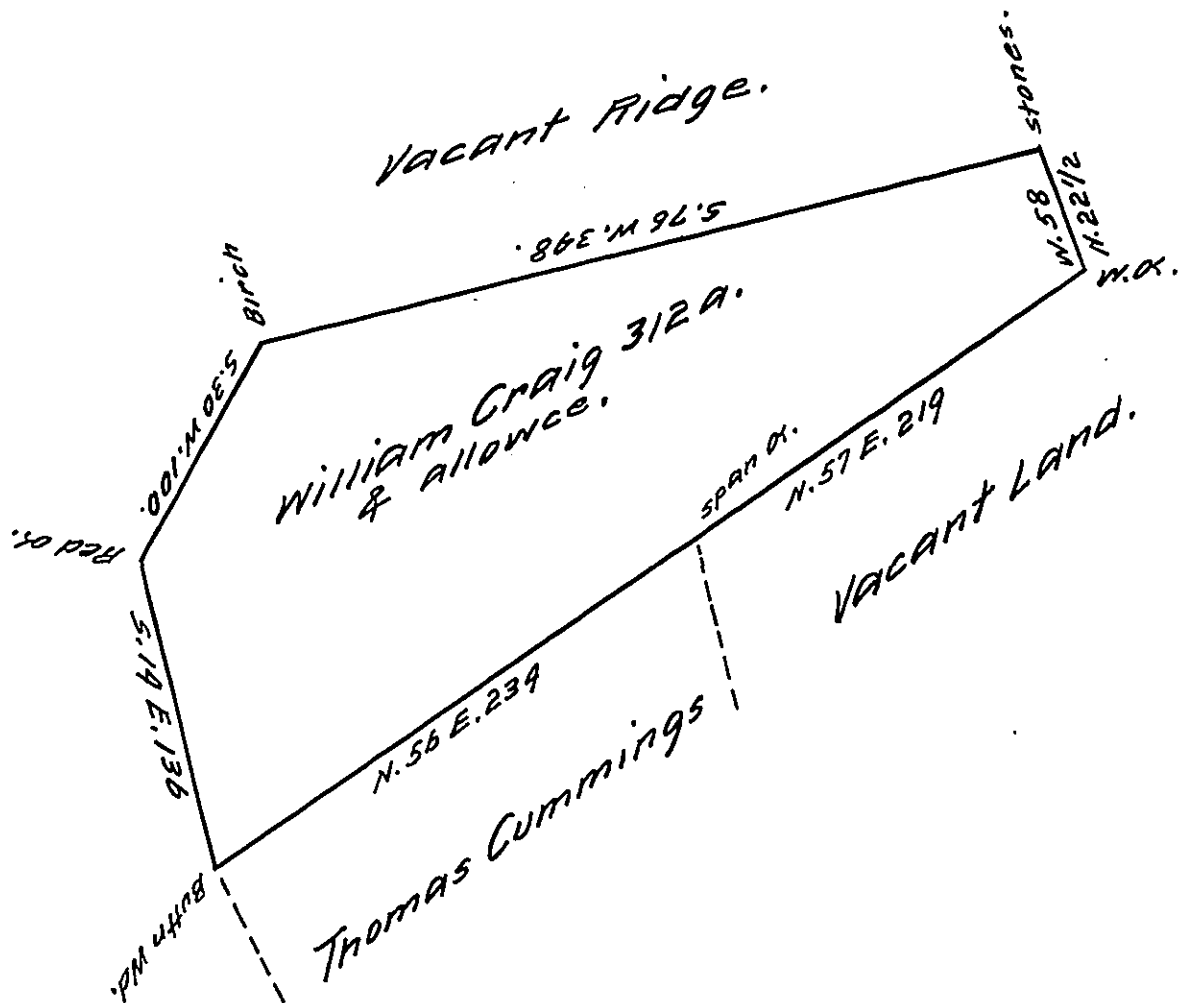


William Craig



Mount Pleasant Survey'd to William Craig on the 26th Day of October 1774. Containing Three hundred twelve Acres & allowance of Six p. ct. Situate upon a Ridge about two Miles Northwestward from Land granted to Jacob Stidely. Including a W. O. Tree marked I. T. in the County of Westmorland. By Warrant of the 28th Day of April, 1774.

P. Joshua Elder D. S.

To John Lukens Esqr. S. Genl.

IN TESTIMONY that the above is a copy of the original remaining on file in the Department of Internal Affairs of Pennsylvania, made conformably to an Act of Assembly approved the 16th day of February, 1833, I have hereunto set my Hand and caused the Seal of said Department to be affixed at Harrisburg, this nineteenth day of December 1911

Henry Houck
Secretary of Internal Affairs.